



**Blue Mountain
Early Learning HUB**

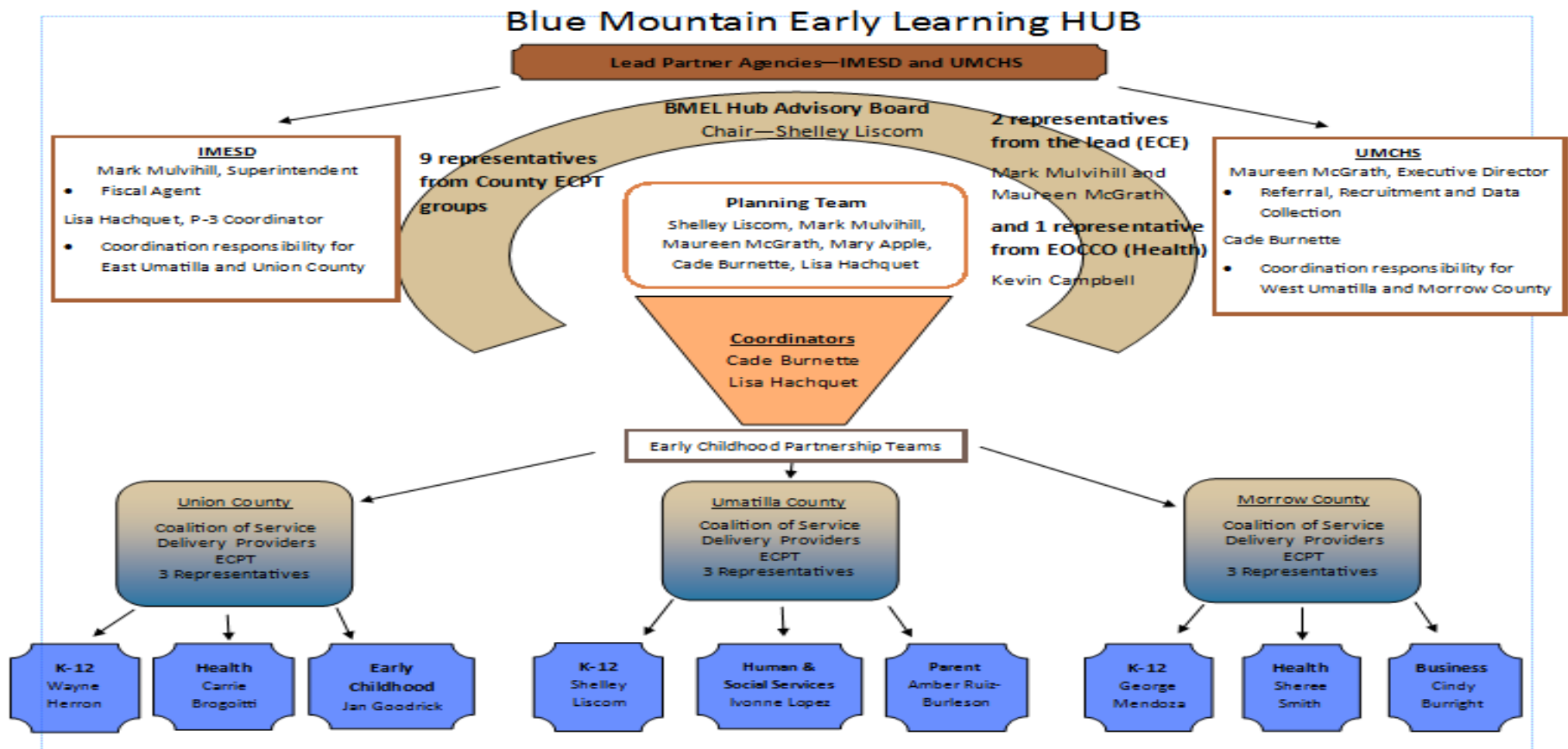
PURPOSE

- An early learning hub is designed to make sure there is collaboration and coordination between all early learning and early childhood (prenatal to 8 yrs old) entities in the areas of health, safety, and education

SERVICE AREA

- Serving children and families in Union, Umatilla, and Morrow counties
- Approximately 7300 square miles of geography
- 23 communities
- 18 school districts
- An estimated 10,000 children reside in these three counties.
- 7600 of these are considered at-risk
- Currently, an estimated 40% of these children receive some kind of Early Childhood services
- Our goal: to provide services to the other 60% or approximately 4600 children

FRAMEWORK & GOVERNANCE



SCOPE OF FOCUS

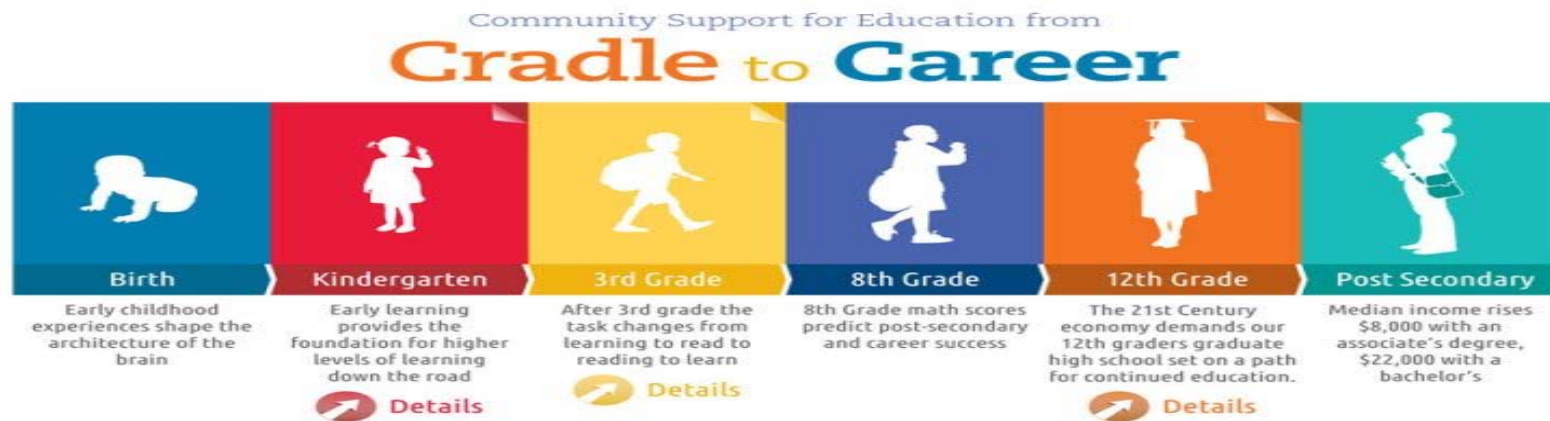
- Parents
- Community Businesses
- Kindergarten thru 3rd grade
- Early Childhood
- Health
- Human & Social Services

The Blue Mountain Early Learning hub seeks to increase services to children considered at-risk in order to promote Kindergarten Readiness and overall child and family well-being.

CURRENT INITIATIVES

- Professional Learning Teams
- Mini mailbox libraries
- Learning Picnics
- Parent Education
- Developmental Screenings
- Health Plus
- Ready for Kindergarten!
- OPEC Bags

THE P-20 SYSTEM

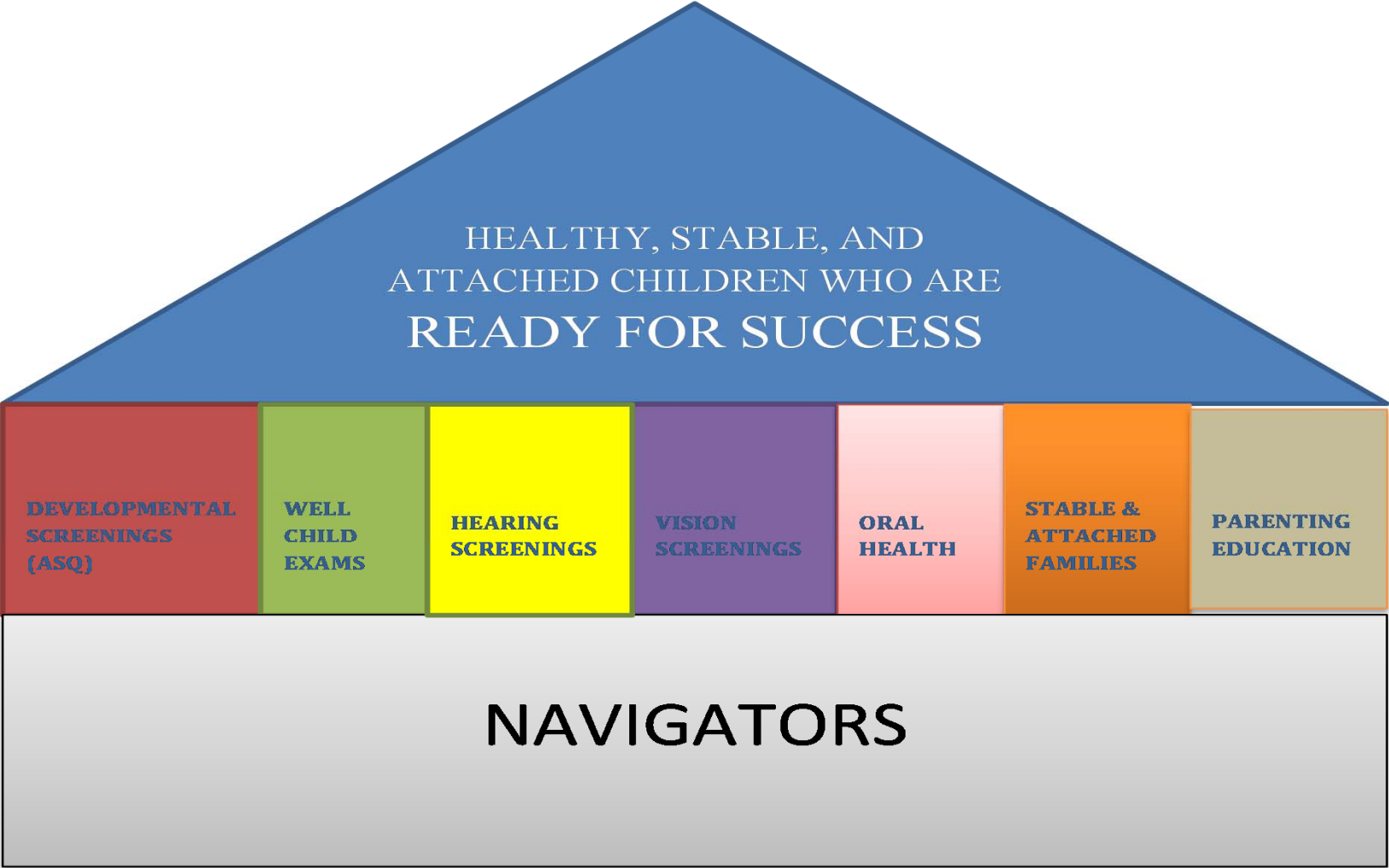


- 3rd grade reading proficiency is a strong positive correlation with high school graduation rates
- An at-risk child who is not reading at grade level by 3rd grade is 13 times less likely to graduate on time from high school (American Educational Research Association, 2014)
- \$1 invested in early childhood saves taxpayers up to \$13 in future costs (Early Childhood Education for All: A Wise Investment, Calman & Tarr-Whelan, 2005)
- Investment in early childhood contributes to increased school readiness and greater number of children meeting or exceeding 3rd grade reading benchmarks which are associated with higher graduation rates, increased tax base, and increased tax revenue (Early Childhood Education for All: A Wise Investment, Calman & Tarr-Whelan, 2005)

BLUE MT. EARLY LEARNING HUB PRIORITIES

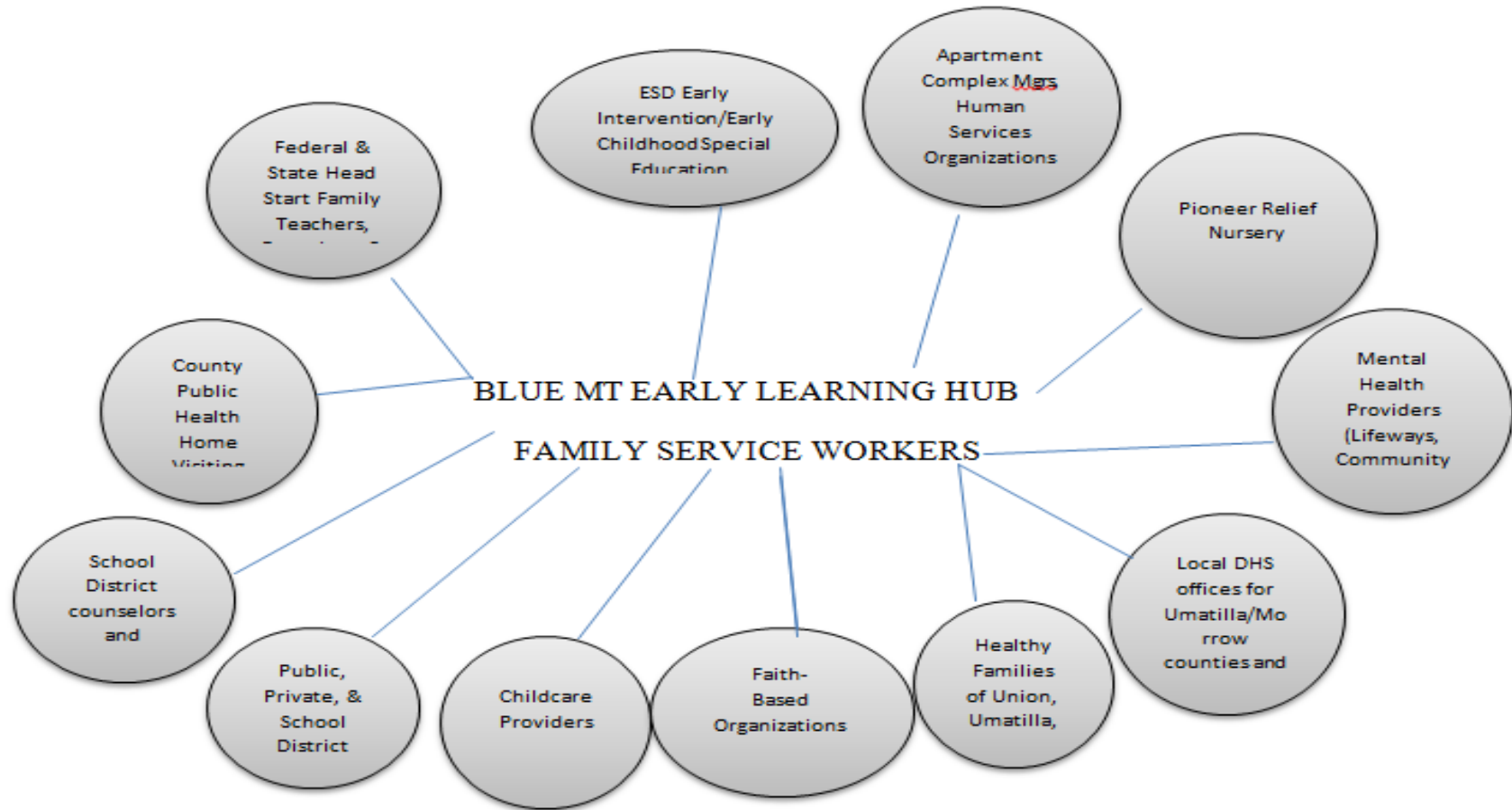
	0 to 3	3 to 3		
	Prenatal to Age 3 Thriving	Ages 3 and 4 Inquisitive	Kindergarten Ready for School	3 rd Grade Reading to Learn
Health	<u>Outcomes:</u> Healthy Baby (Health Home, Dental Home, Developmental Screens)	<u>Outcomes:</u> Healthy Children (Health Home, Dental Home, Developmental Screens)	<u>Outcomes:</u> Healthy Development (Health Home, Dental Home)	<u>Outcomes:</u> Healthy Development (Health Home, Dental Home)
Safety	<u>Outcomes:</u> Reduction of child abuse & neglect rate	<u>Outcomes:</u> Reduction of child abuse & neglect rate.	<u>Outcomes:</u> Reduction of child abuse and neglect rate.	<u>Outcomes:</u> Reduction of child abuse and neglect rate.
Education	<u>Outcomes:</u> Increase in the amount of words and sentences babies and toddlers hear.	<u>Outcomes:</u> Increase in kindergarten assessment results.	<u>Outcomes:</u> Children attain KA proficiency by the end of kindergarten.	<u>Outcomes:</u> Increase in state reading assessment results.
HUB Foundations	HUB Systems Navigator	HUB Marketing Website, App., Messaging, Newsletter		

BLUE MOUNTAIN EARLY LEARNING HUB



BLUE MOUNTAIN EARLY LEARNING HUB

SYSTEM NAVIGATORS



PRIMARY GOALS

- Healthy, stable, attached families
- Children ready for Kindergarten
- Children reading at grade level or above by 3rd grade
- Developmental screenings for all children
- Reduction in number of children in foster care
- Increase number of children receiving adequate dental care

SYSTEM NAVIGATOR RESPONSIBILITIES

- Be knowledgeable of eligibility requirements for community programs and community resources
- Maintain an effective social services referral system for coordinating the resolution of family needs and goals and to promote family strengthening
- Ensure that each family's parenting needs are assessed and met
- Offer satisfaction surveys to families regarding services accessed at least twice per year
- Engage families in the helping process that includes accessing community resources
- Maintain monthly contacts with families as appropriate
- Assist child/family with transitions as necessary
- Be responsible for the collection of complete and accurate data for each participating family as requested and report to early learning hub coordinators monthly

It takes a community to support healthy, stable, and attached families.



QUESTIONS



Cade Burnette, Early Learning Hub Coordinator
(541)564-6878
cburnette@umchs.org

Lisa Hachquet, Early Learning Hub Coordinator
(541)966-3165
Lisa.Hachquet@imesd.k12.or.us